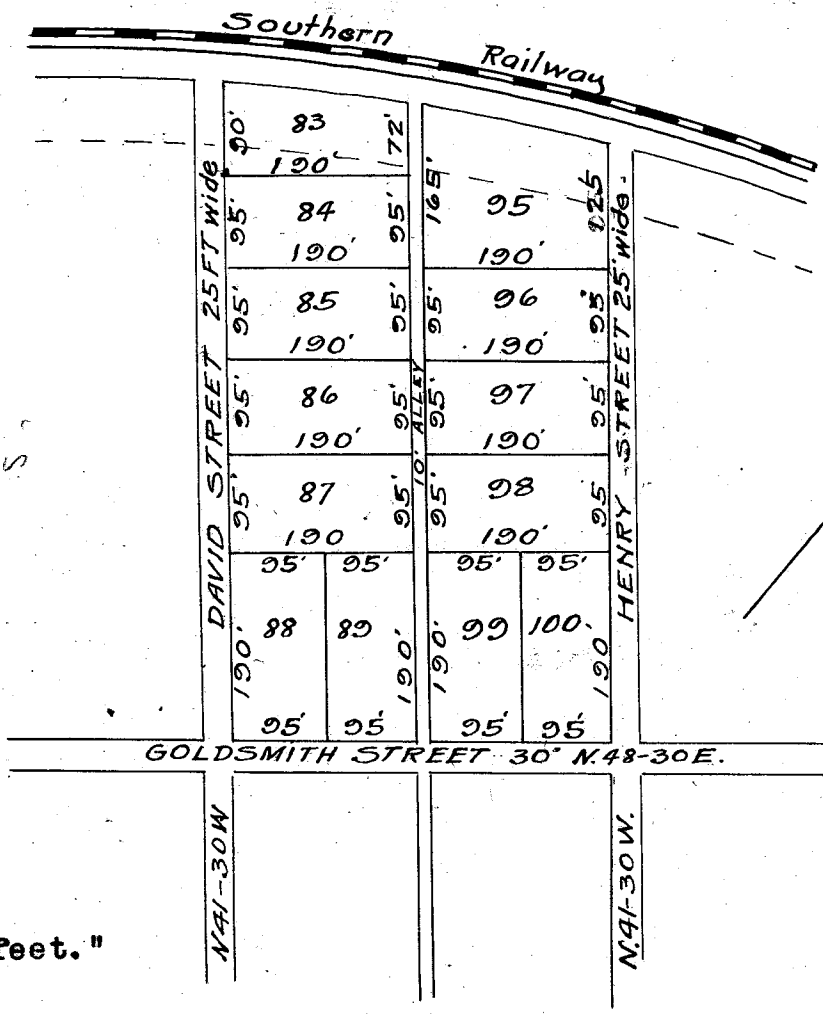


28-35/
30-260

423



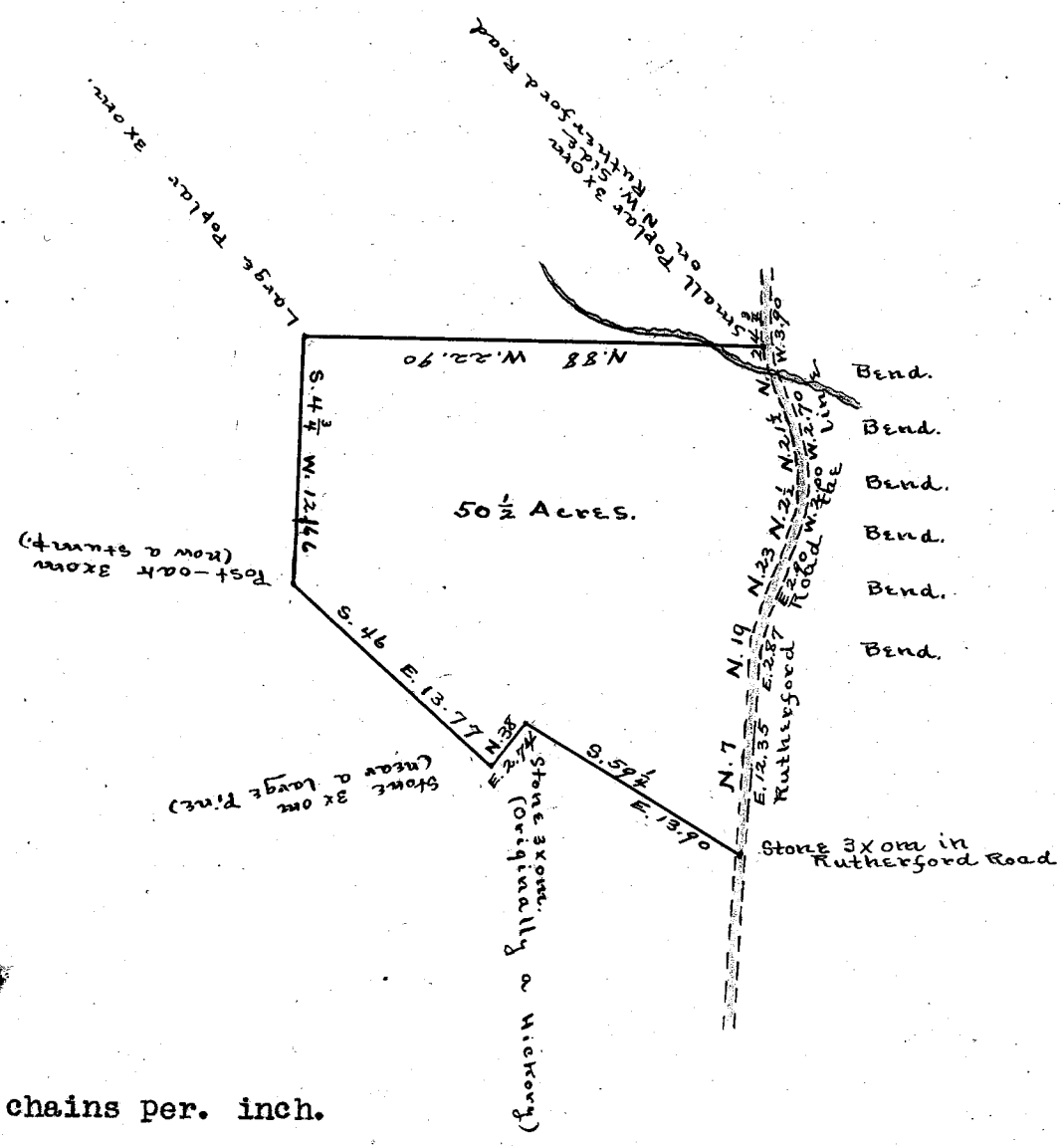
" Scale 1 inch - 100 feet."

The above Plat represents a Block from a plat of the Hammett Lands, as made by Wm. F. Lee, Surveyor.

Recorded Sept. 15th, 1910.

and copied by J. Bates.

423



Scale of 10 chains per. inch.

State of South Carolina,
County of Greenville.

By request of S.G. Black I have surveyed for him a tract of land lying in the County and State aforesaid and containing fifty and one-half (50-1/2) acres, and is represented by the above plat. Surveyed Nov. 16th, 1907.

Jno. M. Cureton, Surveyor.

Recorded Dec. 3rd, 1910.

and plotted by J.B.-